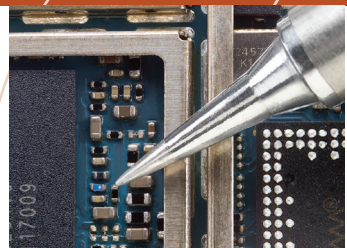


# The ADS200

AccuDrive™ Production  
Soldering Station



Solutions and systems for soldering, rework and repair of electronics

**PAGE**®  
paceworldwide.com

# Introducing the ADS200 Production Soldering Station

## Standard or Optional ISB Tool Stand

Instant SetBack (ISB) automatically lowers temperature when iron is in the Stand to extend tip life and save energy.

## Wide-Angled Design

Allows easy insertion and removal of the TD-200 Iron, yet holds it securely.

## Wet & Dry Cleaners

The Tool Stand incorporates a sponge and non-abrasive brass wool.

## Temperature Presets

Easily scroll between 3 user-definable, preset temperatures.

## Digital LED Display

Viewable at all angles.

## Simple Operation

Power on, set the temperature with the arrow keys and start soldering.



## ESD-Safe\*

Meets ANSI/ESD S13.1-2015 and 20.20 specifications.

## Rugged, All Metal Construction

The Housing, Tool Stand and TD-200 Iron endure extreme, multi-shift production use.

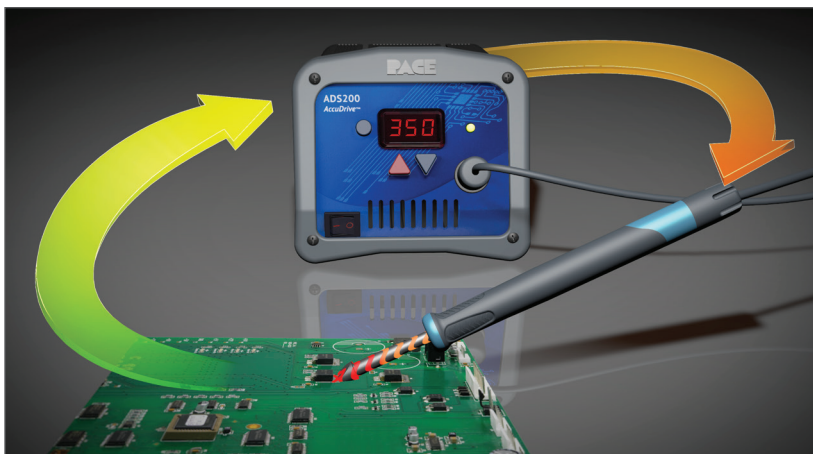
## No Calibration Required

AccuDrive™ absolute temperature accuracy eliminates the need for routine, costly calibration.

\* ANSI/ESD S13.1-2015 provides test methods for measuring current leakage, tip-to-ground reference point resistance, and tip voltage for soldering equipment. Unlike Curie point/RF induction-based soldering systems, the ADS200 passes the peak voltage test with flying colors!

## Driven by new AccuDrive™ Control Technology

Accurate tip temperatures with maximum heat delivery!



AccuDrive™ continuously monitors tip temperature, providing instantaneous load sensing and on-demand power to quickly reflow solder joints at low, safe temperatures, without the need to calibrate.

## How It Works

At the heart of the ADS200 lies PACE's new AccuDrive™ Technology. AccuDrive™ allows you to set honest, highly-accurate temperatures, *without* the need to change cartridges or calibrate. Its advanced electronics provide instantaneous load sensing and on-demand power to quickly reflow solder joints at safe, low temperatures, regardless of the mass of the application.

## Unbeatable Results

AccuDrive™ delivers consistent, repeatable results in both light and heavy-use environments and provides the operator with the flexibility that is essential in today's demanding production operations. Regardless of your application, AccuDrive™ delivers unsurpassed thermal performance, productivity and bottom-line cost savings!

# TD-200 AccuDrive™ Tip-Heater Cartridge Iron

Beneath its sleek dimensions, comfortable ergonomics and cool touch, the TD-200 makes continuous production soldering effortless!

## AccuDrive™ Tip-Heater Cartridges

Provide accurate tip temperatures, instant heat-up/recovery, and high-capacity heating—all at safe, low temperatures.

## Cool Touch™ Grip

Aluminium handle stays cool and comfortable even during extended production use.

## Versatile & Flexible

Works safely on 0201's, sensitive flex circuits or the highest mass, lead-free PCBs.

## Burn-Resistant Cord

ESD-safe cord is soft and flexible, withstanding direct contact with hot tips.

## Ultra-Short Tip-to-Grip

Under 1.9"/48mm for precision operator dexterity when used under a magnifier or microscope.

## Comfortable & Ergonomic

Slim & lightweight, dramatically reduces grip stress and operator fatigue, enhancing productivity.

## ESD-Safe Design

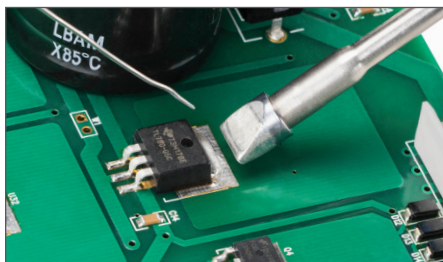
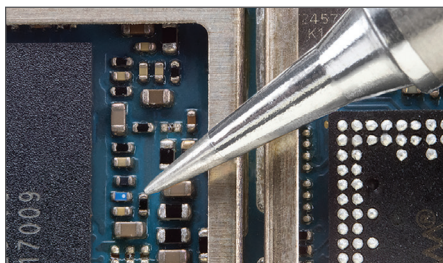
From tip to the end of the cord, the TD-200 protects your ESD-sensitive devices.



Stays Cool All Day

## AccuDrive™ Blue Series Tip-Heater Cartridges

New PACE AccuDrive™ technology combines a high-accuracy sensor and powerful heat generation in one low-cost tip cartridge!



Solder the most delicate 0201 components, or highest mass components & PCBs.

## Inexpensive Cartridges:

Less than half the price of most cartridge style or curie point tips, delivers lowest cost of ownership.

## One Tip Geometry, Any Temperature:

Unlike with curie point tips, select *any* temperature for a chosen tip cartridge without having to buy additional ones.

## Accurate, Honest Temperatures:

Consistent, accurate tip temperatures meet or exceed J-STD-001 requirements.

## High Capacity Integrated Heater:

Delivers up to 120 Watts of *pure power*.

## Superior Heat Transfer/Delivery:

Allows for safer, lower temperatures, reduces risk of PCB damage and improves tip life.

## Hot-Swappable Quick-Change Tips:

Fast & easy change-out within 2 seconds, without turning the unit off.

## Fast Initial Heat-Up:

Achieves set temperature in seconds.

## Wide Variety of Tip Geometries Available:

For the most delicate micro-soldering to challenging, high thermal mass applications.



# AccuDrive™ Blue Series Tip-Heater Cartridges



## Standard Tips\*

For delicate micro-soldering to challenging, high thermal mass applications

Tip	Description	Part Number	Tip	Description	Part Number
	<b>1/32" Conical Sharp Extended</b> (0.80mm)	P/N 1130-0001-P1		<b>1/16" 30° Chisel</b> (1.59mm)	P/N 1130-0019-P1
	<b>1/64" Conical Sharp</b> (0.40mm)	P/N 1130-0002-P1		<b>1/8" 90° Chisel</b> (3.18mm)	P/N 1130-0020-P1
	<b>1/64" Conical Sharp Bent 30°</b> (0.40mm)	P/N 1130-0003-P1		<b>1/16" 30° Bent Chisel</b> (1.59mm)	P/N 1130-0026-P1
	<b>1/64" Conical Sharp Extended</b> (0.40mm)	P/N 1130-0004-P1		<b>MiniWave®</b> (3.05mm)	P/N 1130-0032-P1
	<b>3/64" 30° Chisel</b> (1.20mm)	P/N 1130-0008-P1		<b>Angled MiniWave®</b> (3.05mm)	P/N 1130-0033-P1
	<b>13/64" Extra Large Chisel</b> (5.15mm)	P/N 1130-0010-P1		<b>Angled MiniWave®</b> (2.11mm)	P/N 1130-0035-P1
	<b>1/64" 60° Bevel</b> (0.40mm)	P/N 1130-0011-P1		<b>1/128" Conical</b> (0.20mm)	P/N 1130-0036-P1
	<b>1/32" 30° Chisel</b> (0.80mm)	P/N 1130-0012-P1		<b>1/4" Flat Blade</b> (6.35mm)	P/N 1130-0037-P1
	<b>3/32" 30° Chisel</b> (2.38mm)	P/N 1130-0013-P1		<b>1/128" Conical, Special</b> (0.20mm)	P/N 1130-0050-P1
	<b>3/64" 30° Bent Chisel</b> (1.20mm)	P/N 1130-0016-P1		<b>1/8" 30° Chisel</b> (3.18mm)	P/N 1130-0051-P1



## Ultra-Performance Tips\*

Optimised tip geometries and increased thermal pipeline deliver maximum heat throughput

Tip	Description	Part Number	Tip	Description	Part Number
	<b>1/32" Conical Sharp Ext.</b> (0.80mm)	P/N 1131-0001-P1		<b>1/8" 30° Chisel</b> (3.18mm)	P/N 1131-0051-P1
	<b>1/64" Conical Sharp</b> (0.40mm)	P/N 1131-0002-P1		<b>1/16" Chisel</b> (1.59mm)	P/N 1131-0052-P1
	<b>1/64" Conical Sharp Bent 30°</b> (0.40mm)	P/N 1131-0003-P1		<b>1/8" Chisel</b> (3.18mm)	P/N 1131-0053-P1
	<b>3/64" 30° Chisel</b> (1.20mm)	P/N 1131-0008-P1		<b>3/16" Chisel</b> (4.78mm)	P/N 1131-0054-P1
	<b>13/64" Chisel</b> (5.15mm)	P/N 1131-0010-P1		<b>1/4" Chisel</b> (6.35mm)	P/N 1131-0055-P1
	<b>1/32" 30° Chisel</b> (0.80mm)	P/N 1131-0012-P1		<b>9/32" Chisel</b> (7.14mm)	P/N 1131-0056-P1
	<b>3/32" 30° Chisel</b> (2.38mm)	P/N 1131-0013-P1		<b>5/16" Chisel</b> (7.95mm)	P/N 1131-0057-P1
	<b>1/16" 30° Chisel</b> (1.59mm)	P/N 1131-0019-P1			
	<b>MiniWave®</b> (3.05mm)	P/N 1131-0032-P1			
	<b>1/4" Knife Blade</b> (6.35mm)	P/N 1131-0037-P1			

\* Other tips geometries available upon request. Contact [sales@paceworldwide.com](mailto:sales@paceworldwide.com) for further information.

## Advanced ADS200 Features & Options



**Intuitive and Simple Operation**



**Stackable**



**Optional Instant SetBack (ISB) Tool Stand**

## Also Available from PACE



**TF 1800 BGA/SMT Rework Station with Inductive-Convection Technology**



**IR 3000 Infrared BGA & SMT Rework Station**



**IR 1000 Low-Cost Infrared BGA & SMT Rework Station**



**ST 925 Low-Cost Convective and Infrared Station for SMT Rework**



**MBT 350 Multi-Channel Solder, Desolder & Rework System**



**ARM-EVAC 250 Microprocessor Controlled Fume Extractor**



# ADS200 Specifications

## POWER REQUIREMENTS

<b>P/N 8007-0578</b>	<b>120 VAC with Standard Tool Stand</b>	120 Watts Maximum Output 97-127 VAC, 50/60 Hz
<b>P/N 8007-0579</b>	<b>120 VAC with Instant SetBack Tool Stand</b>	120 Watts Maximum Output 97-127 VAC, 50/60 Hz
<b>P/N 8007-0580</b>	<b>230 VAC with Standard Tool Stand</b>	120 Watts Maximum Output 197-253 VAC, 50/60 Hz
<b>P/N 8007-0581</b>	<b>230 VAC with Instant SetBack Tool Stand</b>	120 Watts Maximum Output 197-253 VAC, 50/60 Hz

## SPECIFICATIONS

<b>Dimensions</b>	104mm (4.1") <b>H</b> x 130mm (5.1") <b>W</b> x 152mm (6") <b>D</b>
<b>Weight</b>	2.3kg (5 lbs)
<b>RoHS Compliant</b>	Yes
<b>Control Technology</b>	AccuDrive™
<b>Tip-to-Ground Resistance</b>	2 Ohms or less
<b>Meets or Exceeds ANSI/J-STD-001</b>	Yes
<b>Tested using ANSI/ESD S13.1-2015</b>	Yes. Tested up to 50MHz using S13.1-2015 Method. Meets or Exceeds J-STD-001 and ESD S20.20 Requirements
<b>Meets or Exceeds ANSI/ESD S20.20</b>	Yes
<b>Temperature Accuracy</b>	Meets or Exceeds ANSI/J-STD-001 Requirements
<b>Temperature Range</b>	193-454°C (380-850°F)
<b>Tips</b>	Uses AccuDrive™ Blue Series Tip-Heater Cartridges
<b>Soldering Iron</b>	TD-200 AccuDrive™ Tip-Heater Cartridge Soldering Iron
<b>Tool Stand</b>	Can hold up to 7 tips, comes standard with sponge, stay-moist well and brass wool to clean oxidation from tip
<b>Optional Instant SetBack (ISB) Tool Stand</b>	Optionally available as P/N 6019-0089-P1 or standard as part of ADS200 Stations P/N 8007-0579 or P/N 8007-0581

[www.paceworldwide.com/ADS200](http://www.paceworldwide.com/ADS200) | [www.facebook.com/paceworldwide](https://www.facebook.com/paceworldwide) | [www.youtube.com/paceworldwide](https://www.youtube.com/paceworldwide)

PACE Europe Limited  
11 Holdom Avenue  
Bletchley, Milton Keynes,  
Buckinghamshire, MK1 1QU  
United Kingdom

phone +44 1908 277666  
fax +44 1908 277777

PACE Worldwide  
346 Grant Road  
Vass, NC 28394

phone 910.695.7223  
toll free 877.882.PACE

P/N 5400-0149UK

**PAGE**<sup>®</sup>  
paceworldwide.com